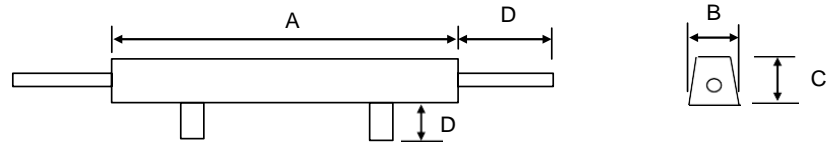
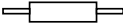
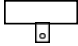
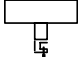
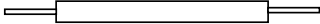


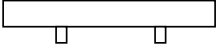


Tank Zinc Anodes



TYPE		A mm	B mm	C mm	D mm	CORE mm	NET WEIGHT Kg	GROSS WEIGHT Kg
CZT 6		280	60	50	200	13	5.60	6.00
CZT 11		300	90	75	60	40x5	11.10	11.50
CZT 11A		300	90	75	60	Clamp	11.10	11.50
CZT 22		1200	55	50	200	13	20.30	22.00
CZT 32		1200	65	65	225	13	30.30	32.00
CZT 45		1230	75	75	225	13	42.90	45.00
CZT 45A		1230	75	75	85	50X10	42.80	45.00

SPECIFICATION	U.S.MIL. A 18001 K	
Pb	0.006% max.	Efficiency: 95%
Fe	0.005% max.	
Cd	0.025% - 0.07%	Potential: 1.05 volt Ag/Ag Cl Ref. Cell
Cu	0.005% max.	
Al	0.1% - 0.5%	Capacity - Amp/Hour 780 per Kg
Zn	99.314% min.	