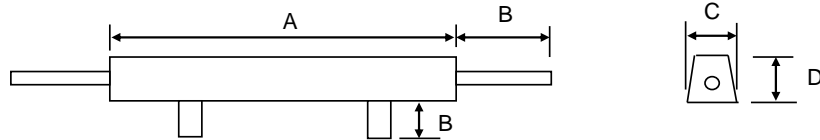

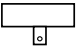
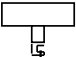



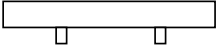


Tank Zinc Anodes



TYPE		A mm	B mm	C mm	D mm	CORE mm	NET WEIGHT Kg	GROSS WEIGHT Kg
<u>CZT 6</u>		250	100	60	50	13	5.60	6.00
<u>CZT 11</u>		300	60	90	75	40x5	11.10	11.50
<u>CZT 11A</u>		300	60	90	75	Clamp	11.10	11.50
<u>CZT 22</u>		1190	225	55	50	13	20.30	22.00
<u>CZT 32</u>		1200	225	65	65	13	30.30	32.00
<u>CZT 45</u>		1230	225	80	75	13	42.90	45.00
<u>CZT 45A</u>		1230	85	80	75	50X10	42.80	45.00

SPECIFICATION	U.S.MIL. A 18001 K	
Pb	0.006% max.	Efficiency: 95%
Fe	0.005% max.	
Cd	0.025% - 0.07%	Potential: 1.05 volt Ag/Ag Cl Ref. Cell
Cu	0.005% max.	
Al	0.1% - 0.5%	Capacity - Amp/Hour 780 per Kg
Zn	99.314% min.	